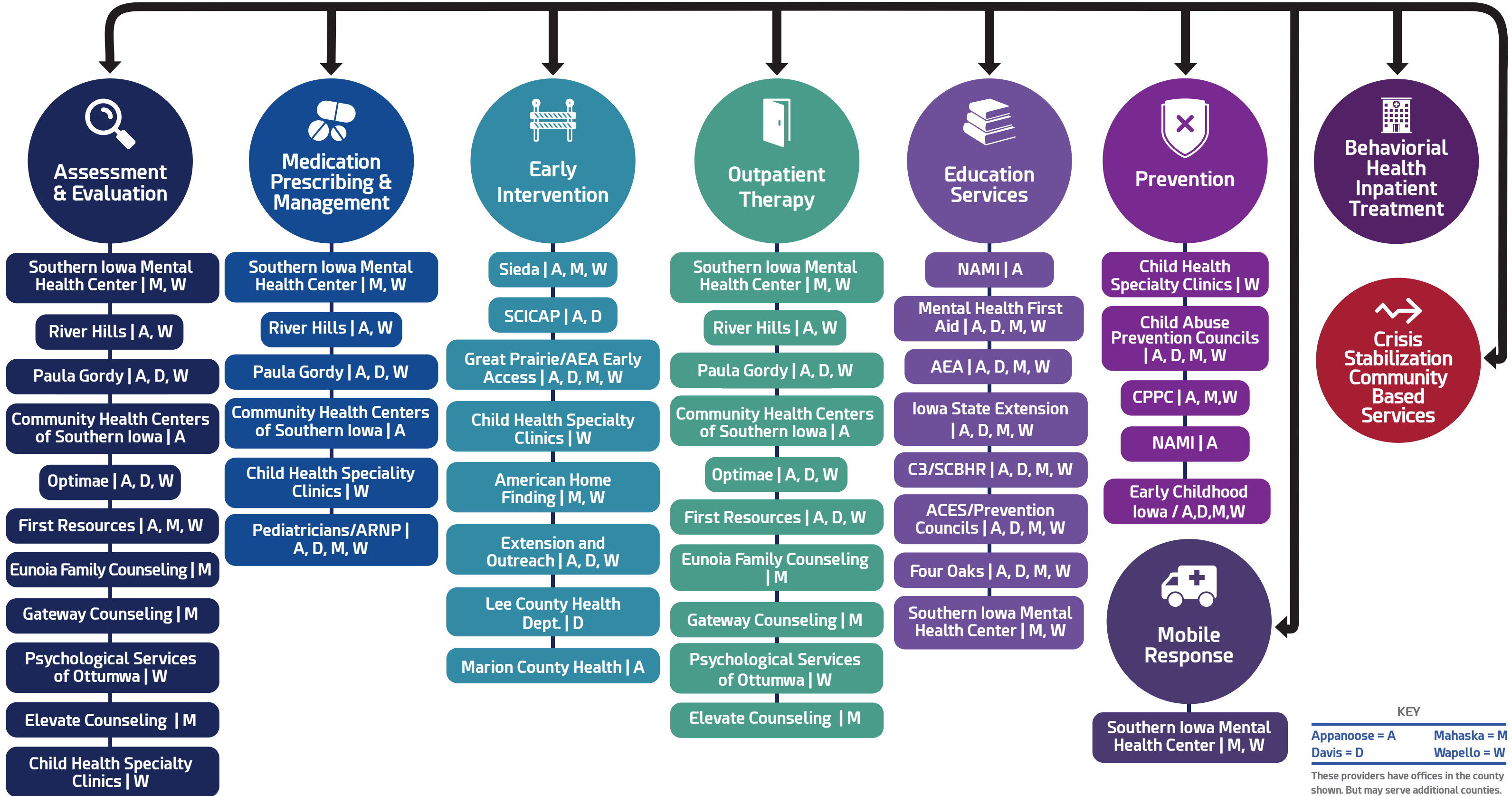
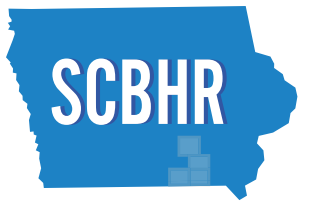


Child Services Flow Chart

SERVICES & PROVIDERS WITH PHYSICAL LOCATIONS



KEY
 Appanoose = A Mahaska = M
 Davis = D Wapello = W
 These providers have offices in the county shown. But may serve additional counties.

Child Service Providers Locations by County



APPANOOSE COUNTY

ASSESSMENT & EVALUATION	MEDICATION PRESCRIBING & MANAGEMENT
River Hills Paula Gordy Community Health Centers of Southern Iowa Optimae First Resources	River Hills Paula Gordy Community Health Centers of Southern Iowa Pediatricians/ARNP
EARLY INTERVENTION	OUTPATIENT THERAPY
Sieda South Central Iowa Community Action Program Great Prairie/AEA Early Access Extension and Outreach Marion County Health	River Hills Paula Gordy Community Health Centers of Southern Iowa Optimae First Resources
EDUCATION SERVICES	PREVENTION
National Alliance on Mental Illness Mental Health First Aid Great Prairie/AEA Iowa State Extension C3/South Central Behavioral Health Region ACES/Prevention Councils Four Oaks	Child Abuse Prevention Councils CPPC/Community Partners Protecting Children National Alliance on Mental Illness Early Childhood Iowa

DAVIS COUNTY

ASSESSMENT & EVALUATION	MEDICATION PRESCRIBING & MANAGEMENT
Paula Gordy Optimae	Paula Gordy Pediatricians/ARNP
EARLY INTERVENTION	OUTPATIENT THERAPY
South Central Iowa Community Action Program Great Prairie/AEA Early Access Extension and Outreach Child Health Specialty Clinics	Paula Gordy Optimae First Resources
EDUCATION SERVICES	PREVENTION
Mental Health First Aid Great Prairie/AEA Iowa State Extension C3/South Central Behavioral Health Region ACES/Prevention Councils Four Oaks	Child Abuse Prevention Councils CPPC/Community Partners Protecting Children Early Childhood Iowa

MAHASKA COUNTY

ASSESSMENT & EVALUATION	MEDICATION PRESCRIBING & MANAGEMENT
Southern Iowa Mental Health Center First Resources Eunoia Family Counseling Gateway Counseling Elevate Counseling	Southern Iowa Mental Health Center Pediatricians/ARNP
EARLY INTERVENTION	OUTPATIENT THERAPY
Sieda Great Prairie/AEA Early Access American Home Finding	Southern Iowa Mental Health Center Eunoia Family Counseling Gateway Counseling Elevate Counseling
EDUCATION SERVICES	PREVENTION
Mental Health First Aid Great Prairie/AEA Iowa State Extension C3/South Central Behavioral Health Region ACES/Prevention Councils Four Oaks Southern Iowa Mental Health Center	Child Abuse Prevention Councils CPPC/Community Partners Protecting Children Early Childhood Iowa
	MOBILE RESPONSE
	Southern Iowa Mental Health Center

WAPELLO COUNTY

ASSESSMENT & EVALUATION	MEDICATION PRESCRIBING & MANAGEMENT
Southern Iowa Mental Health Center River Hills Paula Gordy Optimae First Resources Psychological Services of Ottumwa Child Health Specialty Clinics	Southern Iowa Mental Health Center River Hills Paula Gordy Child Health Specialty Clinics Pediatricians/ARNP
EARLY INTERVENTION	OUTPATIENT THERAPY
Sieda Great Prairie/AEA Early Access Child Health Specialty Clinics American Home Finding Extension and Outreach	Southern Iowa Mental Health Center River Hills Paula Gordy Optimae First Resources Psychological Services of Ottumwa
EDUCATION SERVICES	PREVENTION
Mental Health First Aid Great Prairie/AEA Iowa State Extension C3/South Central Behavioral Health Region ACES/Prevention Councils Four Oaks Southern Iowa Mental Health Center	Child Abuse Prevention Councils CPPC/Community Partners Protecting Children Early Childhood Iowa



Appanoose County

CHILD SERVICE PROVIDERS



**Assessment
& Evaluation**

RIVER HILLS
1015 N 18th St C, Centerville

PAULA GORDY
5010 N.12th St., Centerville

**COMMUNITY HEALTH CENTERS
OF SOUTHERN IOWA**
221 E State St., Centerville

OPTIMAE
209 E. Maple St#9, Centerville

FIRST RESOURCES
310 West Washington St. #2, Centerville



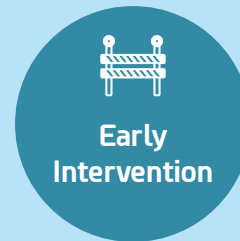
**Medication
Prescribing &
Management**

RIVER HILLS
1015 N 18th St C, Centerville

PAULA GORDY
5010 N.12th St., Centerville

**COMMUNITY HEALTH CENTERS OF
SOUTHERN IOWA**
221 E State St., Centerville

PEDIATRICIANS/ARNP
509 N Madison St. #100, Bloomfield



**Early
Intervention**

SIEDA
111 N Main St., Centerville

**SOUTH CENTRAL IOWA
COMMUNITY ACTION PROGRAM**

**GREAT PRAIRIE/AEA EARLY
ACCESS**
2814 N. Court, Ottumwa

**EXTENSION AND
OUTREACH**
402 East North St., Bloomfield

MARION COUNTY HEALTH
2003 N. Lincoln, Box 152, Knoxville



**Outpatient
Therapy**

RIVER HILLS
1015 N 18th St. C, Centerville

PAULA GORDY
5010 N.12th St., Centerville

**COMMUNITY HEALTH CENTERS OF
SOUTHERN IOWA**
221 E State St., Centerville

OPTIMAE
209 E. Maple St#9, Centerville

FIRST RESOURCES
310 W Washington St # 2, Centerville



**Education
Services**

**NATIONAL ALLIANCE ON
MENTAL ILLNESS**
209 E. Maple St#9, Centerville

MENTAL HEALTH FIRST AID
GPAEA - 2814 N. Court, Ottumwa

GREAT PRAIRIE/AEA EARLY ACCESS
2814 N. Court, Ottumwa

IOWA STATE EXTENSION
501 N. 12th St #4, Centerville

**C3/SOUTH CENTRAL BEHAVIORAL
HEALTH REGION**
209 E. Jackson, Centerville

FOUR OAKS
801 N. Quincy, Suite 5, Ottumwa



Prevention

**CHILD ABUSE
PREVENTION COUNCILS**

**CPPC/COMMUNITY
PARTNERSHIPS FOR
PROTECTING CHILDREN**
402 East North St., Bloomfield

**NATIONAL ALLIANCE ON
MENTAL ILLNESS**
209 E. Maple St#9, Centerville

**EARLY CHILDHOOD IOWA - 4
COUNTIES FOR KIDS
EMPOWERMENT AREA**
641-777-2902



**Mobile
Response**

**SOUTHERN IOWA MENTAL
HEALTH CENTER**
1527 Albia Road, Ottumwa



Davis County

CHILD SERVICE PROVIDERS



**Assessment
& Evaluation**

PAULA GORDY
207 E. Franklin St., Bloomfield

OPTIMAE
712 S West St. #3, Bloomfield



**Medication
Prescribing &
Management**

PAULA GORDY
207 E. Franklin St., Bloomfield

PEDIATRICIANS/ARNP
509 N Madison St #100, Bloomfield



**Early
Intervention**

**SOUTH CENTRAL IOWA
COMMUNITY ACTION PROGRAM**

**GREAT PRAIRIE/AEA EARLY
ACCESS**
2814 N. Court, Ottumwa

EXTENSION AND OUTREACH
402 East North St., Bloomfield

LEE COUNTY HEALTH DEPT.
#3 John Bennett Drive, P.O. Box 1426,
Fort Madison

CHILD HEALTH SPECIALITY CLINICS
123 East Third St., Ottumwa



**Outpatient
Therapy**

PAULA GORDY
207 E. Franklin St., Bloomfield

OPTIMAE
712 S West St #3, Bloomfield

FIRST RESOURCES
112 E Franklin St. #2053, Bloomfield



**Education
Services**

MENTAL HEALTH FIRST AID
GPAEA - 2814 N. Court, Ottumwa

GREAT PRAIRIE/AEA EARLY ACCESS
2814 N. Court, Ottumwa

IOWA STATE EXTENSION
501 N. 12th St #4, Centerville

**C3/SOUTH CENTRAL BEHAVIORAL
HEALTH REGION**
712 S. West St. Ste. 4, Bloomfield

FOUR OAKS
801 N. Quincy, Suite 5, Ottumwa



Prevention

**CHILD ABUSE
PREVENTION COUNCILS**

**CPPC/COMMUNITY
PARTNERSHIPS FOR
PROTECTING CHILDREN**
402 East North St., Bloomfield

**EARLY CHILDHOOD IOWA - 4
COUNTIES FOR KIDS
EMPOWERMENT AREA**
641-777-2902



**Mobile
Response**

**SOUTHERN IOWA MENTAL HEALTH
CENTER**
1527 Albia Road, Ottumwa



Mahaska County

CHILD SERVICE PROVIDERS



**Assessment
& Evaluation**

**SOUTHERN IOWA MENTAL
HEALTH CENTER**
1229 C Avenue E, Oskaloosa

FIRST RESOURCES
1010 East Williams St., Ottumwa

EUNOIA FAMILY COUNSELING
120 N Market, Oskaloosa

GATEWAYS COUNSELING
108 1st Ave E, Oskaloosa

ELEVATE COUNSELING
103 N 3rd St., Oskaloosa



**Medication
Prescribing &
Management**

**SOUTHERN IOWA MENTAL HEALTH
CENTER**
1229 C Avenue E, Oskaloosa

PEDIATRIC & YOUNG ADULT CLINIC
1417 A Ave East Suite 100, Oskaloosa



**Early
Intervention**

SIEDA
114 N Market St., Oskaloosa

**GREAT PRAIRIE/AEA EARLY
ACCESS**
2814 N. Court, Ottumwa

**AMERICAN HOME
FINDING**
217 E 5th St., Ottumwa



**Outpatient
Therapy**

**SOUTHERN IOWA MENTAL
HEALTH CENTER**
1229 C Avenue E, Oskaloosa

EUNOIA FAMILY COUNSELING
120 N Market, Oskaloosa

GATEWAYS COUNSELING
108 1st Ave E, Oskaloosa

ELEVATE COUNSELING
103 N 3rd St., Oskaloosa



**Education
Services**

MENTAL HEALTH FIRST AID
GPAEA - 2814 N. Court, Ottumwa

GREAT PRAIRIE/AEA EARLY ACCESS
2814 N. Court, Ottumwa

IOWA STATE EXTENSION
501 N. 12th St #4, Centerville

**C3/SOUTH CENTRAL BEHAVIORAL
HEALTH REGION**
301 1st Ave East, Oskaloosa

ACES/PREVENTION COUNCILS

FOUR OAKS
801 N. Quincy, Suite 5 Ottumwa

**SOUTHERN IOWA MENTAL
HEALTH CENTER**
1229 C Avenue E, Oskaloosa



Prevention

**CHILD ABUSE
PREVENTION COUNCILS**

**EARLY CHILDHOOD IOWA -
MWECI**
641-451-5437

**CPPC/COMMUNITY PARTNERS
PROTECTING CHILDREN**
212 North I Street, Oskaloosa

**MAHASKA SAFE KIDS
(PREVENTION COUNCIL)**
641-660-5264



**Mobile
Response**

**SOUTHERN IOWA MENTAL
HEALTH CENTER**
1229 C Avenue E, Oskaloosa



Wapello County

CHILD SERVICE PROVIDERS



SOUTHERN IOWA MENTAL HEALTH CENTER
1527 Albia Road, Ottumwa
RIVER HILLS
201 S Market St., Ottumwa
PAULA GORDY
1014 N Elm St., Ottumwa
OPTIMAE
226 W Main St. #201, Ottumwa
FIRST RESOURCES
1010 East Williams St., Ottumwa
PSYCHOLOGICAL SERVICES OF OTTUMWA
226 W Main St. #208, Ottumwa
CHILD HEALTH SPECIALTY CLINICS
123 East Third St., Ottumwa



SOUTHERN IOWA MENTAL HEALTH CENTER
1527 Albia Road, Ottumwa
RIVER HILLS
1014 N Elm St., Ottumwa
PAULA GORDY
1014 N Elm St., Ottumwa
CHILD HEALTH SPECIALTY CLINICS
123 East Third St., Ottumwa
PEDIATRICIANS/ARNP
509 N Madison St. #100, Bloomfield



SIEDA
725 West 2nd St., Ottumwa
GREAT PRAIRIE/AEA EARLY ACCESS
2814 N. Court St., Ottumwa
CHILD HEALTH SPECIALITY CLINICS
123 East Third St., Ottumwa
AMERICAN HOME FINDING
217 E 5th St., Ottumwa
EXTENSION AND OUTREACH
402 East North St., Bloomfield



SOUTHERN IOWA MENTAL HEALTH CENTER
1527 Albia Road, Ottumwa
RIVER HILLS
201 S Market St., Ottumwa
PAULA GORDY
1014 N Elm St., Ottumwa Iowa
OPTIMAE
226 W Main St. #201, Ottumwa
FIRST RESOURCES
1010 East Williams St., Ottumwa
PSYCHOLOGY SERVICES OF OTTUMWA
226 W Main St. #208, Ottumwa



CHILD HEALTH SPECIALITY CLINICS
123 East Third St., Ottumwa
CHILD ABUSE PREVENTION COUNCILS
EARLY CHILDHOOD IOWA - MWECI
641-451-5437
CPPC/COMMUNITY PARTNERS PROTECTING CHILDREN
13011 120th Avenue, Ottumwa
WAPELLO COUNTY CHILDREN'S ALLIANCE (PREVENTION COUNCIL)
641-451-5437



MENTAL HEALTH FIRST AID
GPAEA - 2814 N. Court, Ottumwa,
IOWA STATE EXTENSION
501 N. 12th St. #4, Centerville

C3/SOUTH CENTRAL BEHAVIORAL HEALTH REGION
110 E. Main St., Ottumwa
FOUR OAKS
801 N. Quincy, Suite 5, Ottumwa
SOUTHERN IOWA MENTAL HEALTH CENTER
1527 Albia Road, Ottumwa



SOUTHERN IOWA MENTAL HEALTH CENTER
1527 Albia Road, Ottumwa

CHILD SERVICE PROVIDERS DIRECTORY



A **AEA**
(800) 622-0027

AMERICAN HOME FINDING
(641) 682-3449

**C3/SOUTH CENTRAL BEHAVIORAL
HEALTH REGION**
(641)683-4576

CHILD ABUSE PREVENTION COUNCILS
(641) 791-2636

CHILD HEALTH SPECIALITY CLINICS
(641) 682-8145

**COMMUNITY HEALTH CENTERS OF SOUTHERN
IOWA**
(641) 856-6471

**CPPC/COMMUNITY PARTNERSHIPS FOR
PROTECTING CHILDREN**
402 East North Street, Bloomfield
212 North I Street, Oskaloosa
13011 120th Avenue, Ottumwa

E **EARLY CHILDHOOD IOWA - 4 COUNTIES FOR
KIDS EMPOWERMENT AREA**
(641) 777-2902

EARLY CHILDHOOD IOWA - MWECI
(641) 451-5437

ELEVATE COUNSELING
(641) 676-3999

EUNOIA FAMILY COUNSELING
(641) 569-8092

EXTENSION AND OUTREACH
(800) 622-0027

FIRST RESOURCES
(641) 682-2800

FOUR OAKS
(641) 814-5100

GATEWAYS COUNSELING
(641) 676-3720

GREAT PRAIRIE AEA EARLY ACCESS
(800) 622-0027

I **IOWA STATE EXTENSION**
(800) 622-0027

LEE COUNTY HEALTH DEPT
(319) 372-5225

**MAHASKA SAFE KIDS (PREVENTION
COUNCIL)**
(641) 660-5264

MARION COUNTY HEALTH
(641) 828-2238

**NATIONAL ALLIANCE ON
MENTAL ILLNESS**
(515) 254-0417

OPTIMAE
(641) 472-7236
(641) 684-6441

PAULA GORDY LLC/ANRP
(641) 856-2688

PEDIATRIC & YOUNG ADULT CLINIC
(641) 673-7537

PEDIATRICIANS/ARNP
509 N Madison St #100, Bloomfield

PSYCHOLOGY SERVICES OF OTTUMWA
(641) 954-9146

R **RIVER HILLS**
(641) 856-4400
(641) 683-5773

**SOUTH CENTRAL IOWA COMMUNITY ACTION
PROGRAM**
(641) 895-0800
(641) 774-8133 ext. 224

SIEDA
(641) 682-8741
(800) 622-8340

SOUTHERN IOWA MENTAL HEALTH CENTER
(641) 672-3159
(641) 682-8772

**WAPELLO COUNTY CHILDREN'S ALLIANCE
(PREVENTION COUNCIL)**
(641) 451-5437